

# KETTLER® Carbon

## OUTDOOR FOOSBALL TABLE

### Model 7099-000

Adult Assembly Required

Made in Italy



Picture Similar

Printed on recycled paper.

**KETTLER®** International Inc. • 1355 London Bridge Road • Virginia Beach, VA 23453 USA

[www.kettlerusa.com](http://www.kettlerusa.com)

[info@kettlerusa.com](mailto:info@kettlerusa.com)

Please do not return this  
product to the store.  
Contact KETTLER® for  
parts and service: call toll  
free 866.804.0440 or send  
email to  
[parts@kettlerusa.com](mailto:parts@kettlerusa.com).



## Before Assembly

Before assembling or using the foosball table, please read the following instructions carefully. They contain important information for use and maintenance of the equipment as well as for your personal safety. Keep these instructions in a safe place for maintenance purposes or for ordering spare parts.

All KETTLER® products are designed in accordance with the latest safety regulations and undergo a constant process of quality control during manufacturing. The knowledge gained in this process is used to constantly improve and develop our products. In order to offer our customers the very best in product quality, we reserve the right to make technical changes at any time. In spite of this, should you have any cause for complaint, please contact KETTLER®.

### *Note on Safety*

- The foosball table should be used only for its intended purpose, i.e. for playing with suitable balls.
- All other uses are prohibited and may be dangerous. The manufacturer cannot be held liable for damage or injury caused by improper use of the table.
- Damaged or worn components may endanger your safety or shorten the lifespan of the foosball table. Replace worn or damaged components immediately and remove the table from use until this has been done. Use only spare parts manufactured by KETTLER®.
- The foosball table complies with all safety regulations. Incorrect repairs, alterations to the design (removal of original parts, addition of other components etc.) may endanger the safety of the user.
- Instruct other persons (in particular children) using the table in its correct use, and draw their attention to any potential source of danger, especially when setting up or dismantling the table.
- Caution: During assembly, keep all items out of children's reach (choking hazard-contains small parts).
- Regularly check all screws, bolts etc. to ensure they are in good condition.
- Warning: This is a heavy product. Do not attempt to move or maneuver without adequate help and safety measures. May result in injury. Children should not move table.

### *Handling the Equipment*

- Do not use the foosball table until it has been fully and correctly assembled and checked.
- Set the table up on a level surface.
- When not playing or storing the table, always use the included protective cover.
- Do not use corrosive or abrasive materials to clean the equipment. Ensure that such materials are not allowed to pollute the environment. In most cases a damp cloth is sufficient.
- Waste disposal: KETTLER® products are recyclable. At the end of its useful life, please dispose of correctly and safely complying with your local facilities and guidelines.
- Once the table is assembled it may not fit through your doorways. For this reason you should assemble the table where you intend to use the table. Should you wish to move the table some disassembly may be required.

## Before Assembly (continued)

### General Assembly Instructions

- The equipment must be assembled with care by two adults.
- Separate all the parts including the hardware. Compare quantities with the package contents section and that all items are undamaged. If there are any problems, please contact KETTLER®.
- Before assembling the equipment, study the drawings and photos carefully then assemble in the order shown.
- Please note that there is always a danger of injury when working with tools or doing manual work. Therefore, please be careful during assembly.
- Ensure that your working area is free of possible sources of danger, for example don't leave any tools lying around. Always dispose of packaging material in such a way that it may not cause any danger. There is always a risk of suffocation if children play with plastic bags!
- The fastening items required for each assembly step are shown at the beginning of the step. Use the fastening items exactly as instructed.
- Bolt all the parts together loosely at first, and check that they have been assembled correctly. Then use spanner for final tightening. Then check that all screw connections have been tightened firmly.
- For technical reasons, we reserve the right to carry out preliminary assembly work (e.g. addition of tubing plugs).
- Please keep original packaging, so that it may be used for transport at a later date, if necessary. Goods may only be returned after prior arrangement and in packaging that is safe for transportation ( in the original box if possible). It is important to provide a detailed defect description/damage report.

## Package Contents



Number Included-1



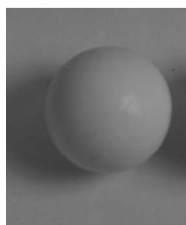
Number Included- 4



Number Included-1



Number Included-8



Number Included-5

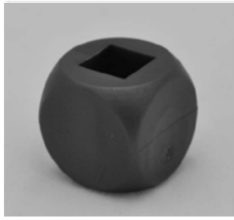


Number  
Included-2

## Package Contents (continued)



Number Included-4  
(M3.9X35 Screw)



Number Included-  
10x Color 1  
10x Color 2



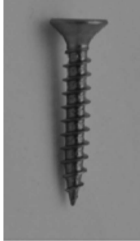
Number Included-  
2x Color 1  
2x Color 2



Number  
Included- **16**  
**Allen Bolts**



Number Included- **8**  
(M2.8 X 11.5 Screw)



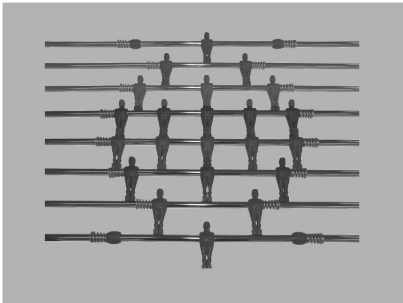
Number Included- **16**  
(M4 X 25 Screw)



Number Included-4



Number Included-2



Number Included-  
1 Set Color 1  
1 Set Color 2



Number Included - 16 Sets



Number Included - 16 Sets

## Step 1



4 required



4 required



1 required

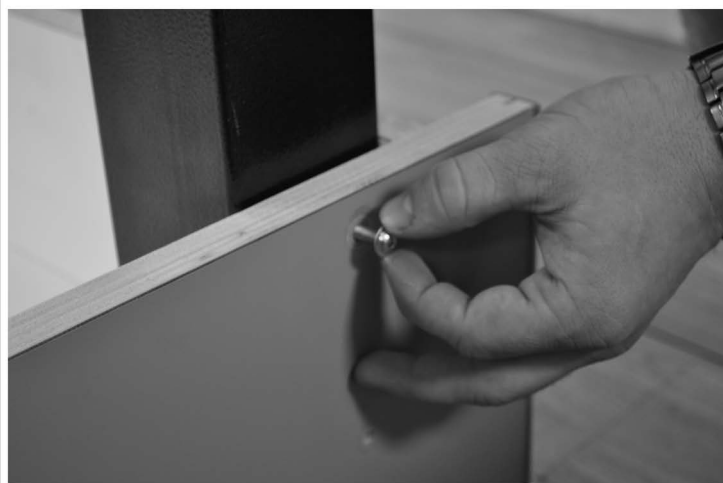


16 required

### Leg Assembly



Place legs into cabinet corner with the screwholes facing inward.



Lightly screw in all four bolts in to each leg by hand.



Next use an Allen Wrench to tighten all bolts. Caution: Do not over-tighten bolts.

## Assembly

### Step 1 (continued)



Screw in floor levelers into all four legs.

## Assembly Pictures Similar

### Step 2

Setting the table upright

IMPORTANT: Have two people complete Step 2.



Turn the table onto its feet to prepare for the next assembly step.

Warning: This is a heavy product. Do not attempt to move or maneuver without adequate help and safety measures. May result in injury.

## Step 3 Rod Assembly



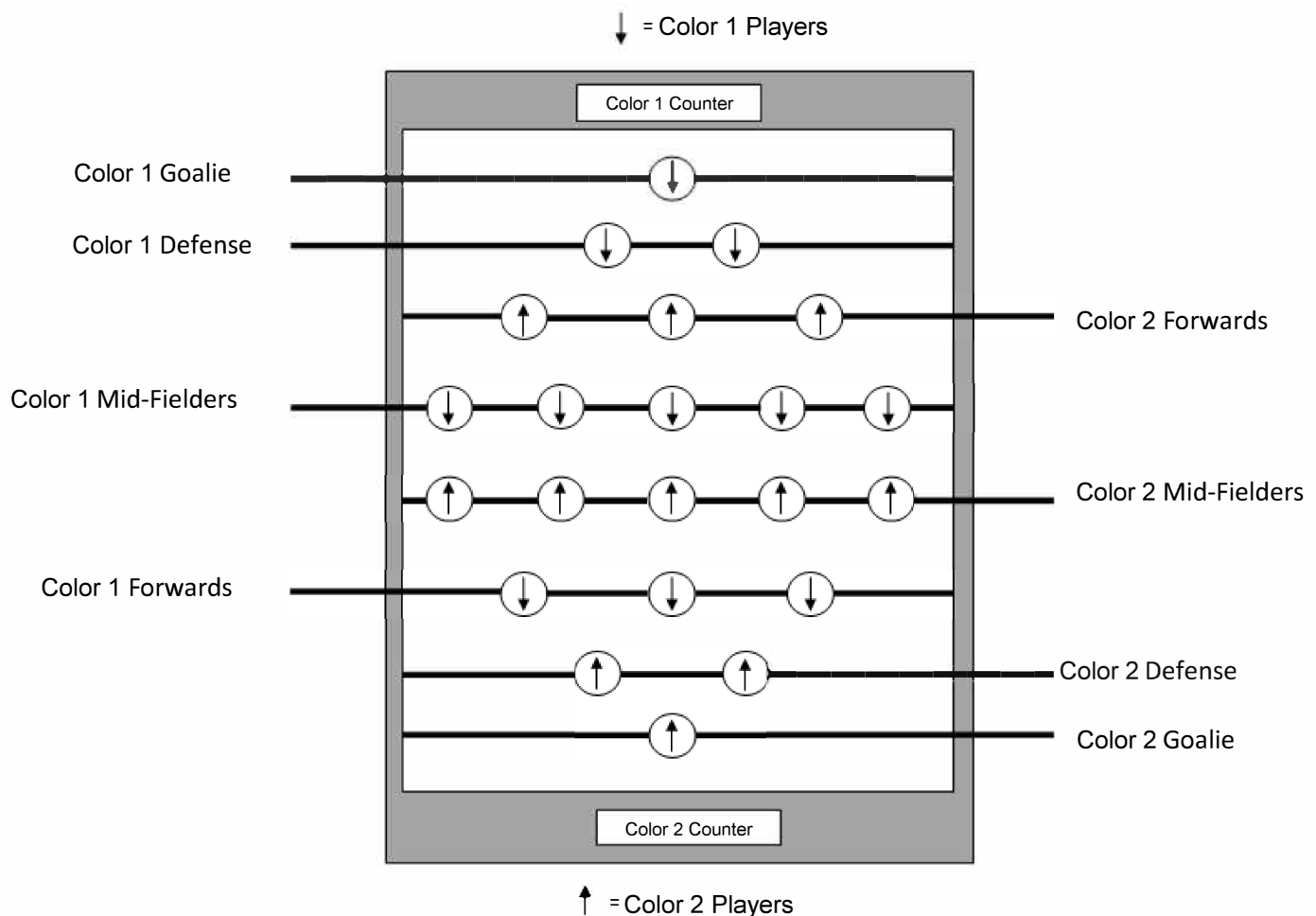
2 sets required

The foosball table comes with 4 rods for each team.

The bar scheme is as follows:

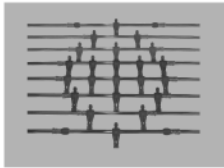
- Rod with 1x player color 1 (Goalie)
- Rod with 2x players color 1 (Defense)
- Rod with 3x players color 2 (Forwards)
- Rod with 5x players color 1 (Mid-Fielders)
- Rod with 5x players color 2 (Mid-Fielders)
- Rod with 3x players color 1 (Forwards)
- Rod with 2x players color 2 (Defense)
- Rod with 1x player color 2 (Goalie)

Take special care to ensure the direction that the player faces during this assembly step.



## Step 4

### Rod bushing assembly



8 rods required



16 sets required



16 sets required



16 required



Insert the 2 part inner bushing in the open cabinet hole around the pole as shown



Insert the 2 part end cap in the open cabinet hole around the pole as shown. Set into cabinet hole.



From the outside, connect the inner bushing and the end cap by screwing them together. Pull screw tight.



Repeat steps for all 16 cabinet holes



### Step 5 Rod Handle Assembly



8 required



Place the rod handle onto the end of the rod. (A)

Lightly tap handle using a hammer until the handle end reaches the line on the rod closest to the table. (B)



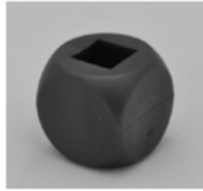
**REPEAT THE STEP 6 A-B FOR EACH ROD**

## Assembly

### Step 6 Counter Assembly



2 required  
M3.9 x 35



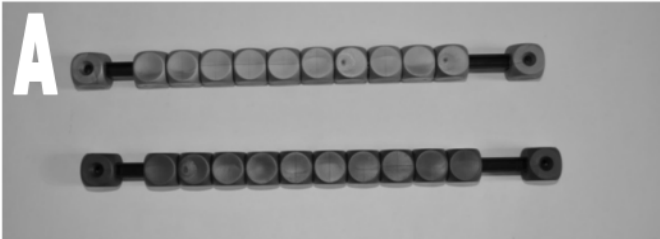
10 required



2 required



1 required



Build color 1 and 2 counters.  
Separate the color 1 and color 2 cubes with screw holes; these need to be installed at each end of the counter rods. Place all like colored cubes on counter rod with cubes having screw holes on each end of both rods. (A, B)

Place color 1 counter into slot on shroud behind the color 1 goalie. (C)



Using two M3.9x35 screws,  
fasten the counter to shroud. (D)

**REPEAT STEP 9 C-D FOR Color 2  
COUNTER.**

## Required Parts



Required 2



Required 8

## Goal Assembly



Located goal holes on each end of the table.



Place ball holders over goal holes with the opening on the bottom.



Fasten ball holder to cabinet by screwing in all four screws.

## FOOSBALL TABLE COVER



The foosball table comes with a cover included when purchased. Always cover your foosball table when not using. This protects the table from the elements and increases the life of the product to provide many years of enjoyment!



The cover is equipped with a Velcro side opening for ease of use and a tie down to ensure that the cover stays in place.

## Limited Warranty

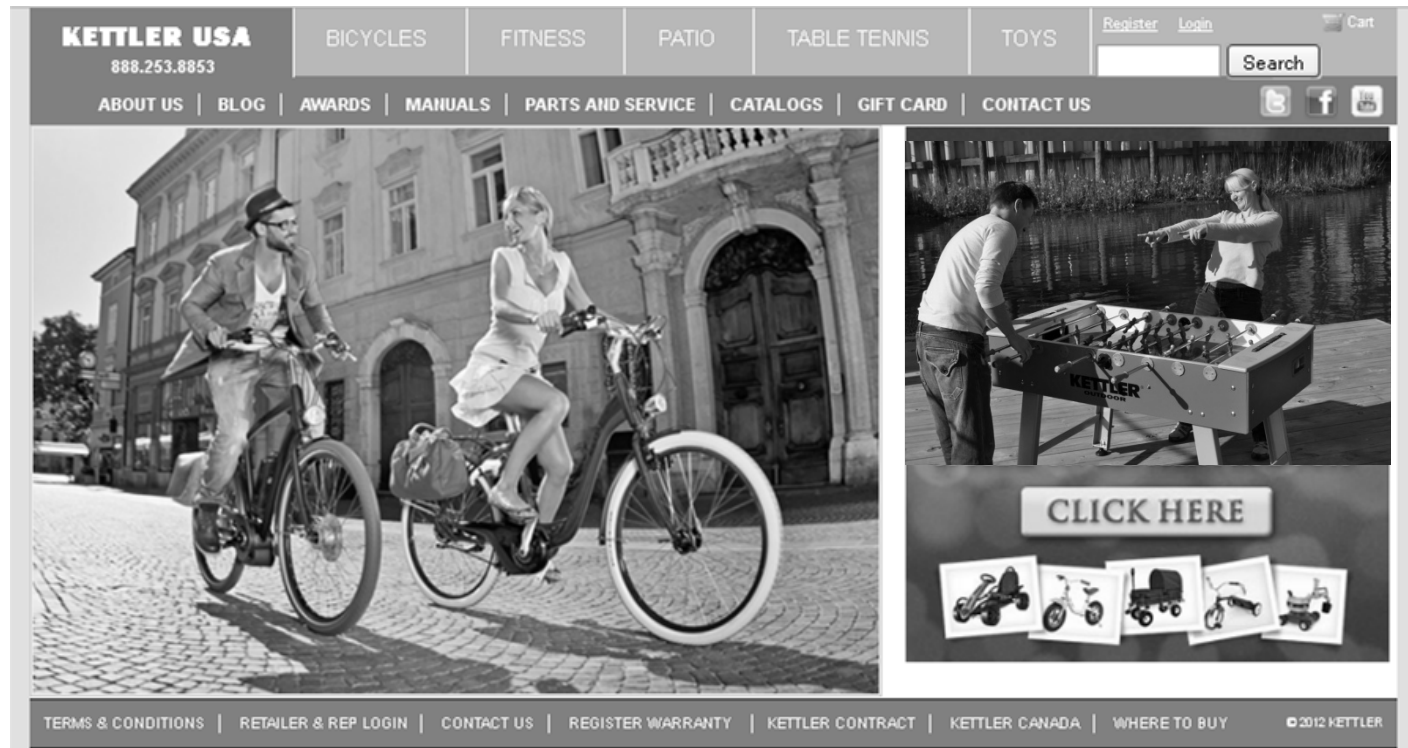
**THERE ARE NO WARRANTIES, EXPRESSED OR IMPLIED, MADE BY EITHER THE DISTRIBUTOR OR THE MANUFACTURER ON KETTLER® PRODUCTS, EXCEPT THE MANUFACTURER'S LIMITED WARRANTY AGAINST DEFECTS IN MATERIAL SET OUT BELOW:**

This KETTLER® Limited Warranty applies to products sold through the KETTLER® Authorized Dealer Network to the original retail purchaser and authenticated by proof of purchase from a retailer located in the United States. Any shipments made under this warranty will be shipped to the United States only. Any shipment outside of the United States will be at the sole cost of the customer. This KETTLER® Limited Warranty is a manufacturer's warranty and is not changed or modified by additional warranties extended by individual retailers at the point of sale. Manufacturer warrants this product to be free from defects in material at the time of the product's tender of delivery for a period of 3 years for residential use. This Limited Warranty is not transferable and does not cover normal wear and tear (including, but not limited to, damage and wear to tires, power shocks, drive belts and other non-durable parts). The liability of the manufacturer under this Limited Warranty shall not include any liability for direct, indirect, or consequential damages resulting from the defect. This Limited Warranty is void if the product is damaged by accident, unreasonable use, improper service, failure to follow instructions provided, modification from its original state, or other causes determined not arising out of defects in material.

This warranty gives you specific legal rights. Should this product become defective due to material within the warranty period, contact KETTLER® Parts & Service Dept. by phone at 866.804.0440, fax at 757.563.9273, or e-mail at [parts@kettlerusa.com](mailto:parts@kettlerusa.com).

**THIS LIMITED WARRANTY IS EXPRESSLY IN LIEU OF ANY OTHER WARRANTIES, EXPRESSED OR IMPLIED, INCLUDING ANY IMPLIED WARRANTY OF MERCHANTABILITY OR FITNESS FOR A PARTICULAR PURPOSE, AND OF ANY OTHER OBLIGATIONS OR LIABILITY ON THE PART OF THE MANUFACTURER. KETTLER® NEITHER ASSUMES NOR AUTHORIZES ANY OTHER PERSON TO ASSUME FOR IT ANY OTHER LIABILITY IN CONNECTION WITH SUCH PRODUCTS.**

Log onto [www.kettlerusa.com/warranty](http://www.kettlerusa.com/warranty) and register your **KETTLER®** Cavalier Foosball Table Warranty online!



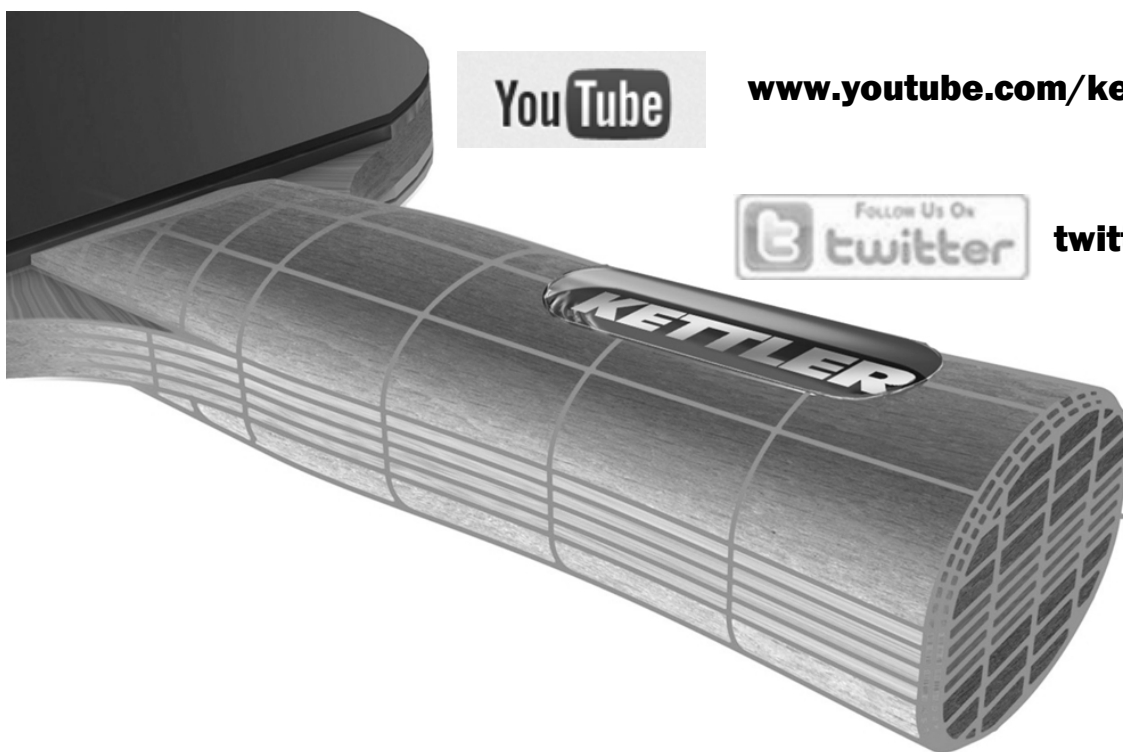
[www.facebook.com/kettlerusa](http://www.facebook.com/kettlerusa)



[www.youtube.com/kettlerusa](http://www.youtube.com/kettlerusa)



[twitter.com/kettler\\_usa](http://twitter.com/kettler_usa)







©2018 KETTLER® All rights reserved. No part of this manual may be reproduced, stored in a retrieval system, or transmitted in any form, or by any means, such as electronic, mechanical, photocopying or otherwise, without the prior written permission of KETTLER®.

**KETTLER®** International Inc.,  
 1355 London Bridge Road, Virginia Beach, VA 23453 USA  
[www.kettlerusa.com](http://www.kettlerusa.com) • E-mail: [info@kettlerusa.com](mailto:info@kettlerusa.com)  
 For parts/service: call 866-804-0440 or e-mail [parts@kettlerusa.com](mailto:parts@kettlerusa.com)